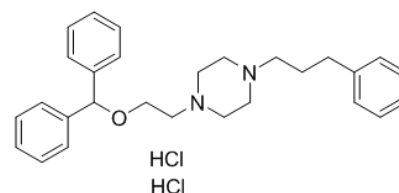


**Product Name** : GBR 12935 dihydrochloride  
**Cat. No.** : PC-42928  
**CAS No.** : 67469-81-2  
**Molecular Formula** : C<sub>28</sub>H<sub>36</sub>Cl<sub>2</sub>N<sub>2</sub>O  
**Molecular Weight** : 487.5042  
**Target** : Monoamine Transporter  
**Solubility** : DMSO: 20 mg/mL



## Biological Activity

A potent and selective dopamine reuptake inhibitor with IC<sub>50</sub> of 3.7 nM; shows 78-fold selectivity versus 5-HT reuptake.

## References

Matecka D, et al. J Med Chem. 1996 Nov 22;39(24):4704-16.

Bhargava HN, et al. Pharmacology. 1996 Apr;52(4):243-51.

**Caution: Product has not been fully validated for medical applications. Lab Use Only!**

E-mail: tech@probechem.com